

SoWMEX/TiMEX Weather Summary

For Research Planning Purpose Only

Date of report(UTC):2008/06/25 08:33

Author of report:George Lu

Submitted at:2008/06/25 09:07

REVIEW OF YESTERDAY'S FORECAST:

Typhoon Fengshen landed at southern China around the east of Hong Kong this early morning. The synoptic weather condition shows the southwesterly flow around the South China Sea and Taiwan was increased while typhoon Fengshen landed at southern China. Some shallow convective cells with scatter showers enhanced and moved into southern Taiwan while they closed the coastline today (Image1). The visible satellite images shows some outflow boundary initiated at the offshore of southern China moved fast toward Taiwan Straits (Image2), Those small scale features were not expected by yesterday forecast, based on the view of synoptic scale.

DAY 1 UPDATE:

Those small scale convective cells still need to be monitoring. The southerly flow around this island will continue today. The analysis form NCEP GFS shows a dry zone (Image3) just locates on the upstream of southern Taiwan, which may not favorable of the development of mesoscale system.

DAY 2 FORECAST:

According to NCEP GFS, the synoptic pattern of tomorrow is quite similar than today. (Image4). It shows the Typhoon Fengshen already locates on the Southern China and undergoes the process of extratropical transition.

LONGTERM OUTLOOK:

No further outlook on the day after tomorrow. Because the experiment is terminated then.

Image1

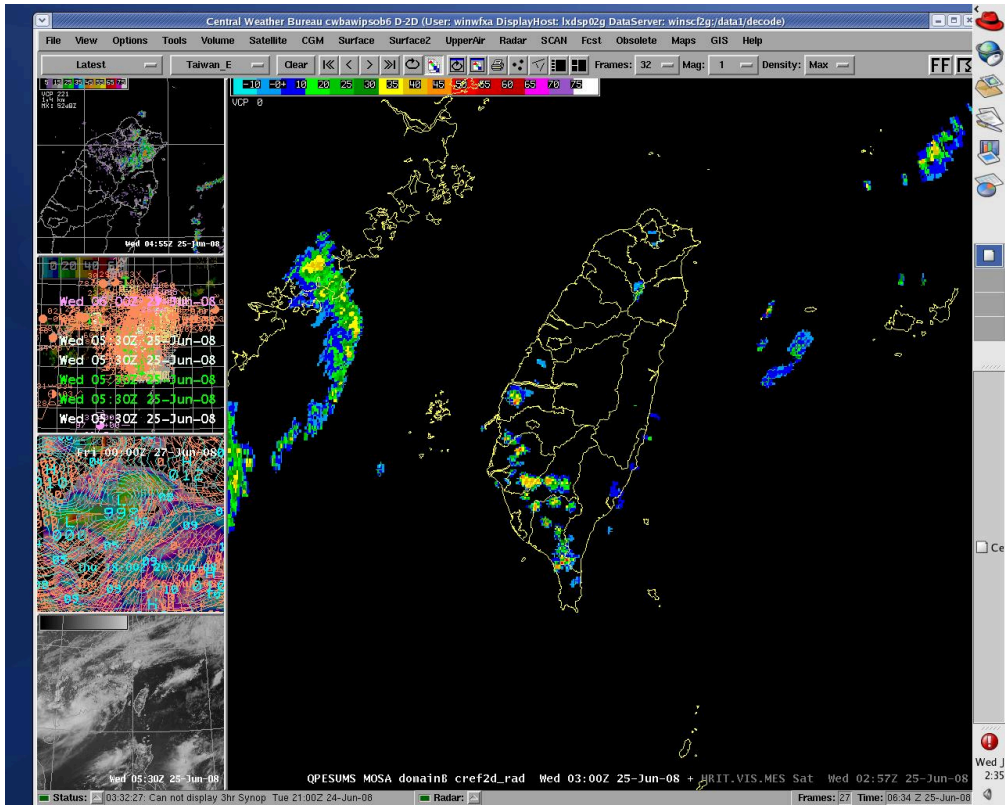


Image2

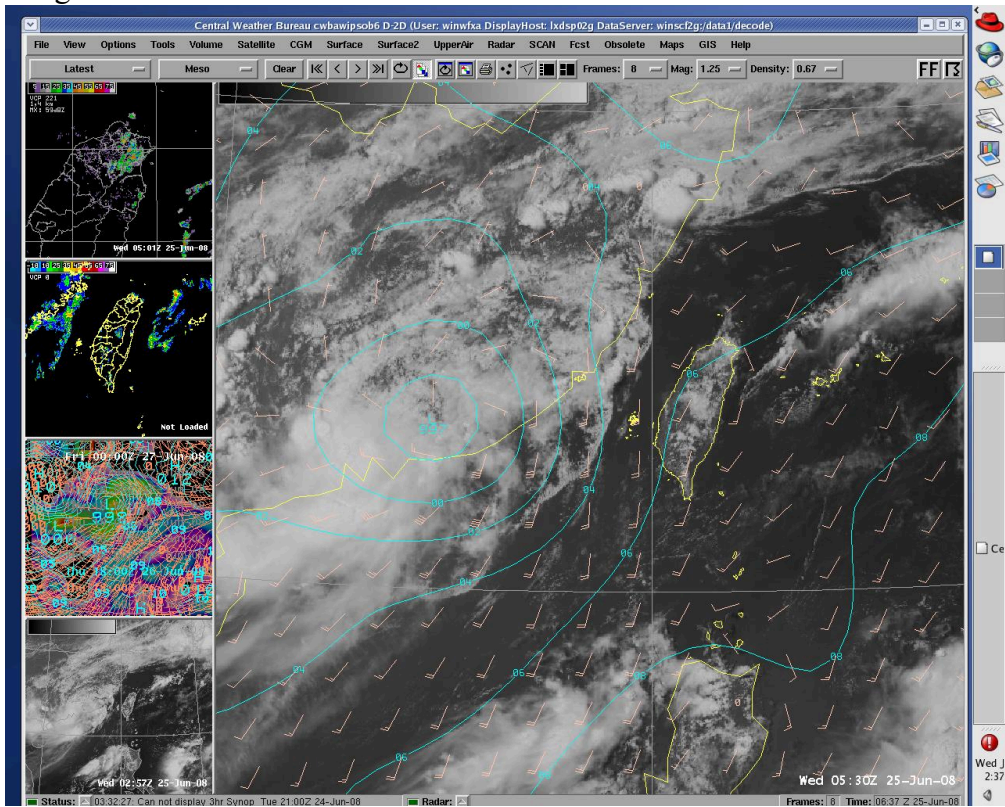


Image3

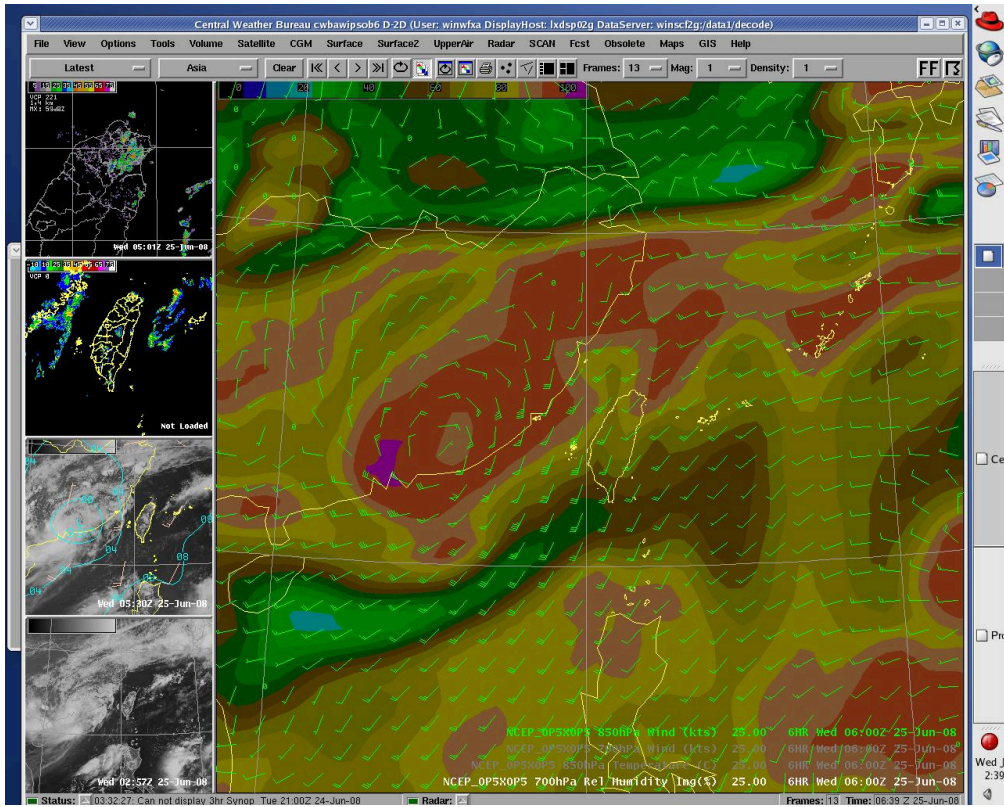


Image4

